

CRES GEOTHERMAL TEAM

RECENT PROJECTS COMPLETED

PYLAIA TOWN-HALL

- 21 6'' boreholes
- 80 m deep
- U-tube , Φ 40
- 10 Water-source HPs
- $155 \text{ kW}_{\text{th}}$ & $215 \text{ kW}_{\text{C}}$
- Fan-coils
- Central AHU



EUROPEAN PUBLIC LAW CENTRE

- Borehole 24 °C
- Heat Exchanger
- 2 Water-source HPs
- 70 kW_{th} & 100 kW_{th}
- Fan-coils
- 2 Central AHU
- Solar Collectors
- COP = 3,91 & 4,3



CRES OFFICE BUILDING

- Production-Reinjection Well
- 1,5 m³/h, 18°C
- Water-source HP
- 14,5 kW_{th} & 21,5 kW_C
- Fan-coils
- Minimal water temperature 7 °C



NTUA BUILDING

- Borehole of 280 m, 35 m³/h
22 °C
⇒ 80 % energy
- 13 VEHEs 8½", 90 m deep,
U-TUBE
⇒ 20 % energy
- 2 Water-source HPs
- 526 kW_{th} & 461 kW_C
- COP = 3,3 – 3,5



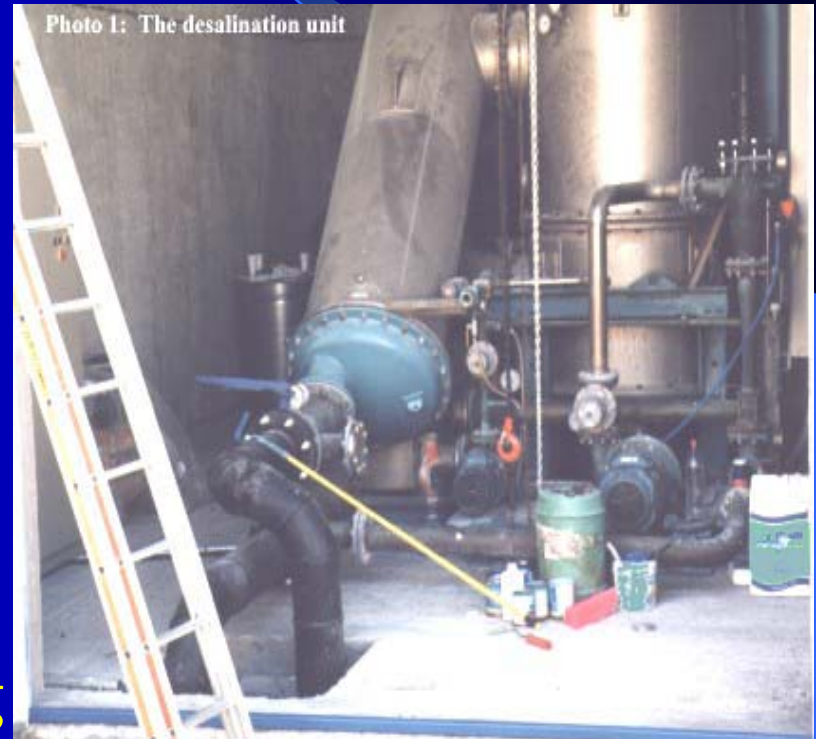
LANGADAS GEOTHERMAL CASCADE UTILIZATION SYSTEM

- 90 m³/h water at 22-40 °C
- 3 boreholes 8" of 100-200 m
- 2.2 km water transportation pipe
- Water Tanks
- 8 Water-source Heat Pumps
- Building entering temp. 45 °C
- Low temperature heating systems
- Automations (Inverter)



KIMOLOS GEOTHERMAL WATER MED DESALINATION UNIT

- Geothermal well Prassa 1
- Depth 188 m
- Flow-rate 80 m³/h
- Wellhead Temperature 61,5 °C
- Desalination Technology MED
- Geothermal Water: Heating and Feed-water



GEOHERMAL EXPLORATION in VOUNALIA, MILOS Isl.

- 10 wells (70 – 185 m)
- Total 550 m³/h
- Wellhead Temps. 55 – 100 °C
- 20.000 – 55.000 ppm
- The field can support:
 - GEOTHERMAL DESALINATION
MED Unit delivering 75 m³/h fresh
water
 - Binary power plant 600 kWe

